

PALWA GOLD BRASS CRYSTAL GLASS CHANDELIER, GERMANY, 1960



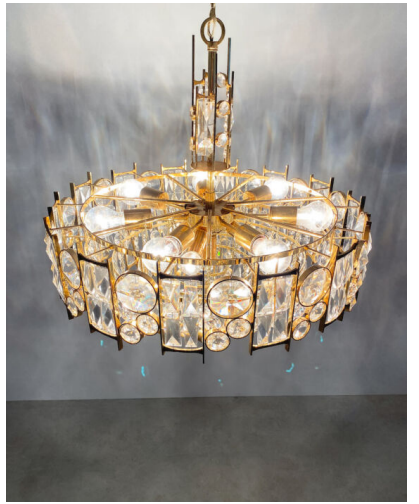
\$8,990

SKU: N/A | **Categories:** [Chandeliers](#), [Lighting](#), [New](#) | **Tag:** [palwa](#)



GALLERY IMAGES





PRODUCT DESCRIPTION

Palwa.

Large crystal glass encrusted gilt brass chandelier, Germany 1960

Very well preserved large 25.6" chandelier, handcrafted, consisting of gilded brass rings and cages encrusted with crystal glass varying in size and form.

It holds 11 bulbs each (3x e14 with 40W max), 7 with e26/27 with 60W max).

It is in excellent condition and has been professionally cleaned, the main cord has been rewired.

We can customize the length if required.

Dimensions are: 25.6" (diameter) 19.5" height (chandelier only) 28.74" (total drop).

ADDITIONAL INFORMATION

Dimensions	65 × 65 × 73 cm
creator	Palwa
material	Brass, glass, gold
period	1960-1970

YOU MAY ALSO LIKE...



**Palwa Pair of Gilt
Brass and Crystal
Glass Encrusted
Sconces**



**Palwa Tendril
Ribbon Glass Gold
Chandelier, 1960**



**Gilt Brass and Glass
Sconces by Palwa**



**Palwa Gilt Brass and
Glass Chandelier
/DERIVE**