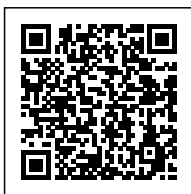


**PALWA GOLD BRASS CRYSTAL GLASS CHANDELIER, GERMANY, 1960**

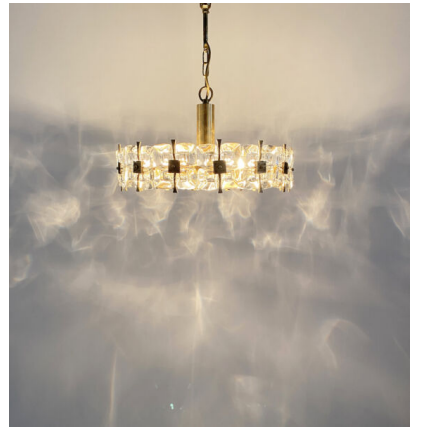
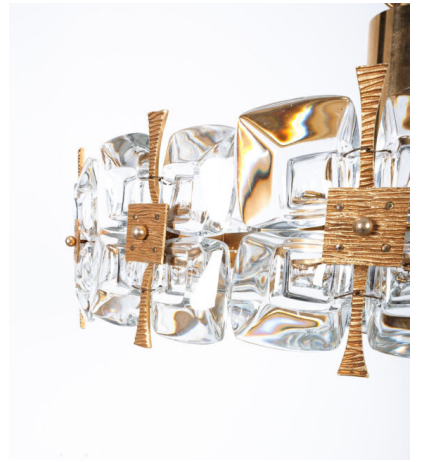


**\$4,800**

**SKU:** N/A | **Categories:** [Chandeliers](#), [Lighting](#), [New](#) | **Tag:** [palwa](#)



**GALLERY IMAGES**





## **PRODUCT DESCRIPTION**

Palwa.

Large 20" crystal glass encrusted gilt brass chandelier, Germany 1960.

Very well preserved chandelier, handcrafted, consisting of gilded brass with crystal glass varying in size.

It holds 8 bulbs (e14 with 40W max). Led's are possible.

It is in excellent condition and has been professionally cleaned, the main cord has been rewired.

We can customize the length if required.

Provenance: It derives from an estate (villa) in Vienna.

Dimensions are: 20.1" (diameter) 11" height (chandelier only) 23.6" (total drop).

**ADDITIONAL INFORMATION**

<b>Dimensions</b>	51 × 51 × 60 cm
<b>creator</b>	Palwa
<b>material</b>	Brass, glass, gold
<b>period</b>	1960-1970



**YOU MAY ALSO LIKE...**



**Palwa Chandeliers**  
**Lamps Petite Gold**  
**Brass Glass**  
**Refurbished, 1960**



**Palwa Pair of Gilt**  
**Brass and Crystal**  
**Glass Encrusted**  
**Sconces**



**Palwa Tendril**  
**Ribbon Glass Gold**  
**Chandelier, 1960**



**Gilt Brass and Glass**  
**Sconces by Palwa**