

**STILNOVO ORIGINAL CHANDELIER FROM SATINIZED GLASS AND BRASS, ITALY,
CIRCA 1950**

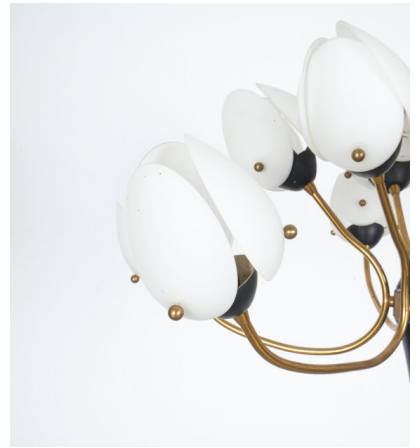


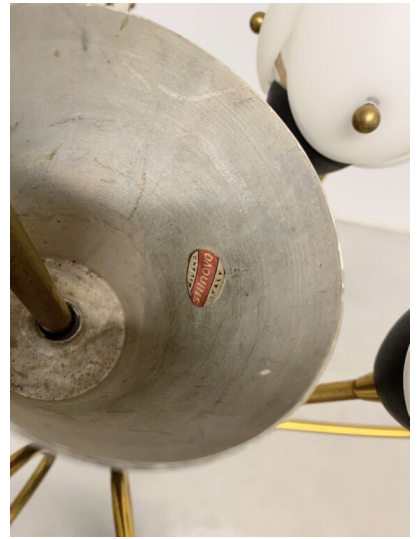
\$7,850

SKU: N/A | **Categories:** [Chandeliers](#), [Lighting](#), [New](#) | **Tag:** [stilnovo](#)



GALLERY IMAGES





PRODUCT DESCRIPTION

Stilnovo.

Chandelier from satinized glass and brass Italy, circa 1950- labelled Milano Stilnovo Italy (sticker)

Rare and large 25.6" chandelier with 12 floral shades from 3 petals each executed from Opaline form glass.

It's a beautiful piece that has the enchanting lightness of real Stilnovo design from the early 1950s.

We also tried to open the flowers which is visible in one of the lit pictures. This could also be an option.

The light was handcrafted and shows wear especially to the metal-work and lacquer. The glass shows no cracks or chips around the fringes.

Overall it's in good vintage condition, ready to being used. We cleaned the lamp and gave it a new main power cord.

This lamp holds 12 bulbs with 40W max (Edison 14 socket, LED recommended due to heat development). Dimensions are: 25.6" (diameter) 14.7" (height chandelier only) 37.4" (height with the stem)

The overall height can be easily customized with a longer rod in our workshop (free of charge).

ADDITIONAL INFORMATION

Dimensions	47 × 32 × 62 cm
material	Glass, Brass
period	1950 – 1960

YOU MAY ALSO LIKE...



**Stilnovo Yellow
Glass Pendant Lamp
Glass, circa 1950**



**Stilnovo Pearl White
Red Globe Pendant
Lamp, circa 1965**



**Stilnovo One of Four
Stilnovo Pendant
Lamps Opal Glass,
circa 1950**



**Stilnovo Satin Glass
and Brass Pendant
Lamp, Italy, 1950**