

SALVATORE GREGORIETTI FLUSH MOUNT IN FIBERGLASS AND BRASS, CIRCA 1960



\$2,000

SKU: N/A | **Categories:** [Flush Mounts](#), [Lighting](#), [New](#) | **Tags:** [fiberglass](#), [Salvatore Gregorietti](#)



GALLERY IMAGES



PRODUCT DESCRIPTION

Salvatore Gregoriotti, flush mount, fiberglass, brass, Italy, 1960s, labeled Lamperti.

Dimensions are 15.74" x 15.74" x 11.81" Sculptural flush mount by Italian designer Salvatore Gregoriotti.

This is a very scarce light from a rather unknown designer who was one of the first to experiment with resin and fiberglass.

It later led to popular designs that involved fabric and resin and influenced the cocoon lamps by Castiglioni f.e.

This light has a light fiberglass shade and a total of 3 bulbs.

The brass accents are nicely done and it's in very good condition, newly rewired. We have the luxurious chandelier version available also.

The lamp is in good vintage condition with no major flaws, working for 110/220V.

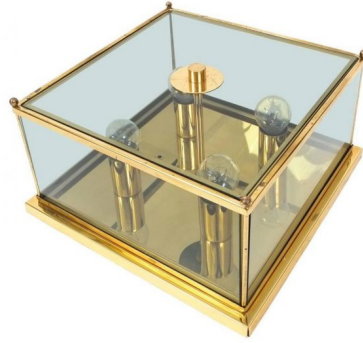
ADDITIONAL INFORMATION

| | |
|-------------------|-----------------------|
| Dimensions | 40 × 40 × 30 cm |
| material | fiberglass, Brass |
| period | 1970 – 1980 |
| creator | Salvatore Gregorietti |

YOU MAY ALSO LIKE...



**Salvatore
Gregoriotti
Chandelier in
Fiberglass and
Brass, circa 1970**



**Art Deco Brass and
Glass Flush Mount**



**Jean Perzel 3 Large
Art Deco Brass and
Glass Flush Mounts**