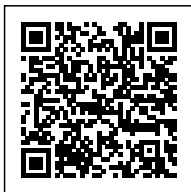


GILT PALWA BRASS AND GLASS CHANDELIER

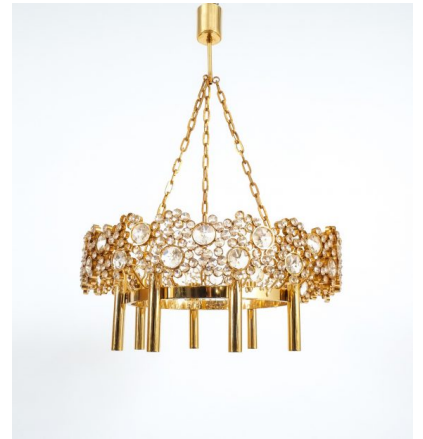


\$8,000

SKU: N/A | **Categories:** [Chandeliers](#), [Lighting](#) | **Tags:** [brass](#), [Glass](#), [gold](#), [palwa](#), [palwa chandelier](#), [sciolari](#)



GALLERY IMAGES



PRODUCT DESCRIPTION

Beautiful 21" Corona chandelier from the 1960's by Palwa. Handcrafted and executed with great attention to detail this chandelier consists of hundreds of gilded brass rings encrusted with crystal glass varying in size. The light takes 8 bulbs with 40W max and is in excellent condition, it has been professionally restored and rewired. Please note that we can provide you with a longer chain or stem to alter the height according to your requirements. Different canopies are available also.

ADDITIONAL INFORMATION

Dimensions	54 × 54 × 79 cm
creator	Palwa
material	Brass, gold
period	1960-1970

