

EAMES APPROPRIATION DINING ARMCHAIR WITH POLISHED RESIN LEOPARD SEAT

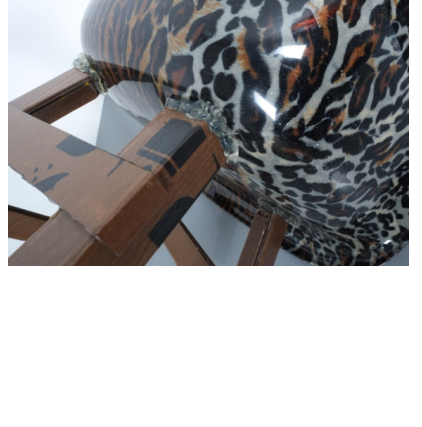


\$5,750

SKU: N/A | **Categories:** [Arm Chairs](#), [Dining Chairs](#), [New](#), [Seating](#) | **Tags:** [bert loeschner](#), [charles ray eames](#), [eames](#)



GALLERY IMAGES





PRODUCT DESCRIPTION

Eames. Made to order handmade Eames chair interpretation, Kim by Artist/Designer Bert Loeschner, Austria.

Very cool interpretation of one of the icons of modern design, the armchair mould seat by Ray and Charles Eames. Based on the original fiberglass mould this seat has been executed with a leopard fabric and glossy resin finish. The base is comprised of reinforced carton with resin finish, resembling a roughly constructed structure whereas it is a highly differentiated ingenious design. The shockmounts were re-thought with industrial glue. Due to the use of materials this chair is lightweight yet stable. The seat height has been raised to a contemporary level. Measurements are 18.11 (seat height) x 32.67"(h) x 23.6"x 25.2".

A highly peculiar yet beautiful design which can be thought of as a set of 8-12 pieces around a large dining table as well as a pair of chairs in bedroom or boudoir. These pieces will be handcrafted and made to order and can be customized. We can provide different finishes such as tiger or plain plywood; Each piece is handmade and uses different materials therefore each piece is a unique original. Production will take a couple of weeks depending on the amount ordered. VAT may apply for some countries.

ADDITIONAL INFORMATION

Dimensions	64 × 60 × 83 cm
creator	Bert Loeschner
material	Lacquered Epoxy Resin, Fiberglass, Paper
period	2020

YOU MAY ALSO LIKE...



**[Poul Kjaerholm](#)
[Early Fritz Hansen](#)
[PK20 Lounge Chair](#)
[in Black Leather,](#)
[1987](#)**



**[Fabricius and](#)
[Kastholm](#)
[Black Blue](#)
[High Back Bird Desk](#)
[Chair FK 6725, 1964](#)**



**[Marco Zanuso](#)
[Maggiolina Sling](#)
[Black Leather Chair](#)
[by Zanotta, 1947](#)**



**[Marco Zanuso](#)
[Maggiolina White](#)
[Leather Chair by](#)
[Zanotta, 1947](#)**